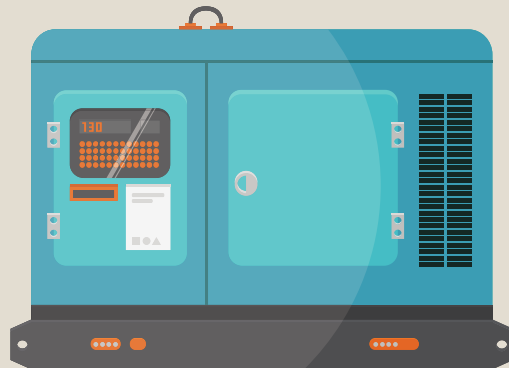


POWER OUTAGE PREPAREDNESS GENERATOR SAFETY



PORTABLE GENERATOR SAFETY

- Be sure the needs of the device (electric load) is supported by your generator and does not exceed the manufacturers specifications.
- Position your generator where it's exhaust can vent safely to prevent carbon monoxide poisoning.
- Only use extension cords that are properly sized for an individual generator's electric to prevent overheating.
- Keep cords out of high traffic areas so they don't present a tripping hazard.
- Never run cords under rugs or carpets where heat can be generated or where damage to a cord may go unnoticed.

PERMANENT GENERATOR SAFETY

- Installation requires a licensed electric contractor or other qualified professional.
- Ensure electricity from your generator does not flow or "backfeed" into PG&E's power lines. The most common way to avoid this is to install a double pole, double throw transfer switch.
- Any additions or adjustments to your house wiring should be inspected by your city or county building department.
- Once installation is complete, call PG&E at 1-800-743-5000 to let them know about your backup system so they are aware of your generator when working on an outage in your area.

FAST TIPS

**Size up your energy needs!
Generators can produce enough electricity to power your laptop and phone or your entire home.**

- How much power would you need during an outage?
- Would you want power for a few critical items, for a home, or entire facility?
- Which appliances and equipment need to be functional and how much energy does each require?

FOR MORE INFORMATION

- For additional information including how to select the best generator for you, visit www.pge.com
- For additional preparedness resources visit www.ReadySLO.org or call the Office of Emergency Services at (805) 781-5011.



**OFFICE OF
EMERGENCY
SERVICES**