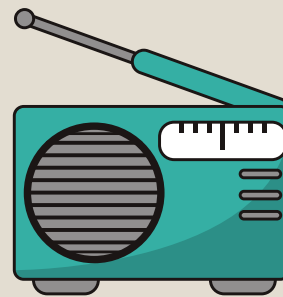


POWER OUTAGE PREPAREDNESS COMMUNICATIONS



In a long term power outage, communication methods will begin to fail. It is important to have backup methods in place.

CELL PHONES

- Purchase a solar charger, external battery, car charger or crank USB charger for your cell phone. Test your back up charger to ensure it works.
- Remember, cell towers will only have back-up power for a limited amount of time or possibly none at all. Be prepared to be unable to communicate via cell phone.

LANDLINE TELEPHONES

- Traditional copper landlines should function for an extended period of time during a power outage. In San Luis Obispo County, AT&T is the only provider of these copper lines. For more information visit www.att.com.
- VoIP phones rely on internet connection and will not work during an outage.
- Keep a hard copy list of important phone numbers in case you do not have access to them digitally.

FOR MORE INFORMATION

- For additional preparedness resources visit www.ReadySLO.org or call the Office of Emergency Services at (805) 781-5011.

OTHER COMMUNICATIONS METHODS

- Invest in a battery powered or hand crank NOAA Weather Radio. These radios are inexpensive and can be purchased online or at most electronic stores and will pick up emergency broadcasts.
- Walkie talkies or multi-pack handheld radios may be an option to communicate short distances.
- Satellite phones are an expensive but reliable way to communicate when power is out and can be purchased online.

FAST TIPS

- Residential customers who have special energy needs due to qualifying medical conditions should sign up for the **Medical Baseline Program** through PG&E. This program can help by providing extra notifications in advance of a Public Safety Power Shutoff.
- You can find out more information about the Medical Baseline Program by calling 1-800-743-5000 or visiting www.pge.com



OFFICE OF
EMERGENCY
SERVICES